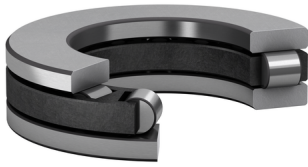


# 81226 TN

- Popular item

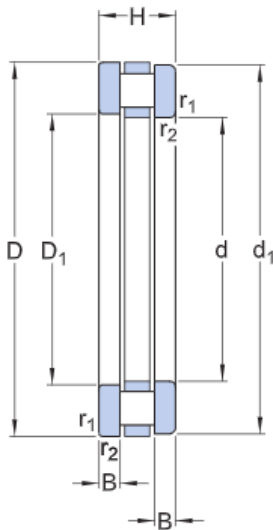


## Cylindrical roller thrust bearings

Bearing data, Design considerations [Tolerances](#), table, table, values, [Design considerations](#), table

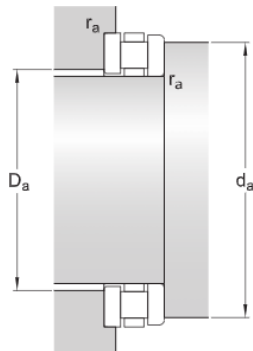
Bearing interfaces [Seat tolerances for standard conditions](#)

### Technical specification



#### DIMENSIONS

|                  |            |                                  |
|------------------|------------|----------------------------------|
| d                | 130 mm     | Bore diameter                    |
| D                | 190 mm     | Outside diameter                 |
| H                | 45 mm      | Nominal height                   |
| d <sub>1</sub>   | 187 mm     | Outside diameter shaft washer    |
| D <sub>1</sub>   | 133 mm     | Bore diameter housing washer     |
| B                | 13 mm      | Height shaft washer              |
| r <sub>1,2</sub> | min.1.5 mm | Chamfer dimension housing washer |



#### ABUTMENT DIMENSIONS

|    |            |                           |
|----|------------|---------------------------|
| da | min.181 mm | Abutment diameter shaft   |
| Da | max.137 mm | Abutment diameter housing |
| ra | max.1.5 mm | Fillet radius             |

## CALCULATION DATA

|                           |                |             |
|---------------------------|----------------|-------------|
| Basic dynamic load rating | C              | 380 kN      |
| Basic static load rating  | C <sub>0</sub> | 1 460 kN    |
| Fatigue load limit        | P <sub>u</sub> | 137 kN      |
| Reference speed           |                | 700 r/min   |
| Limiting speed            |                | 1 400 r/min |
| Minimum axial load factor | A              | 0.171       |

## MASS

|              |         |
|--------------|---------|
| Mass bearing | 3.98 kg |
|--------------|---------|

## INCLUDED PRODUCTS

|                                 |            |
|---------------------------------|------------|
| Roller and cage thrust assembly | K 81226 TN |
| Shaft washer                    | WS 81226   |
| Housing washer                  | GS 81226   |